

# ELEMENT

HOME BUILDERS



## AVAILABLE PLAN: CLEMENTINE

3,596 SF Livable, 5,911 SF Total, 5 Beds, 5 Baths, Powder Room, 2 Car Garage

Options: Office, 3 Car Garage (+256 SF), Fireplaces, Pool, Spa, Summer Kitchen. \*Elevation A has an additional upgrade cost for metal roof and exterior finishes\*



REGENCY  
REAL ESTATE

THE GROVE AT THE HARVEST DISTRICT | THEGROVEOAKLAND.COM  
SALES: 407-815-4161 | HOMESITE: 15752 E OAKLAND AVE

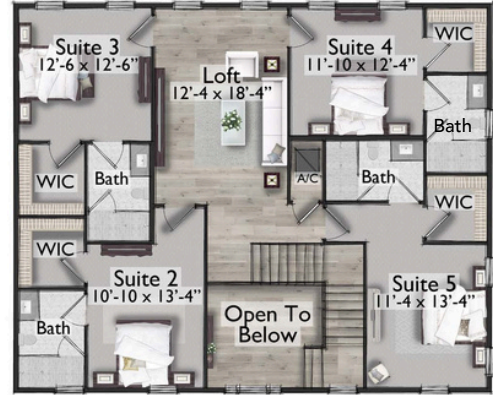
# ELEMENT

HOME BUILDERS

FIRST FLOOR (2,133 SF)



SECOND FLOOR (1,463 SF)



OPTIONAL OFFICE



OPTIONAL CASITA



3 CAR GARAGE

